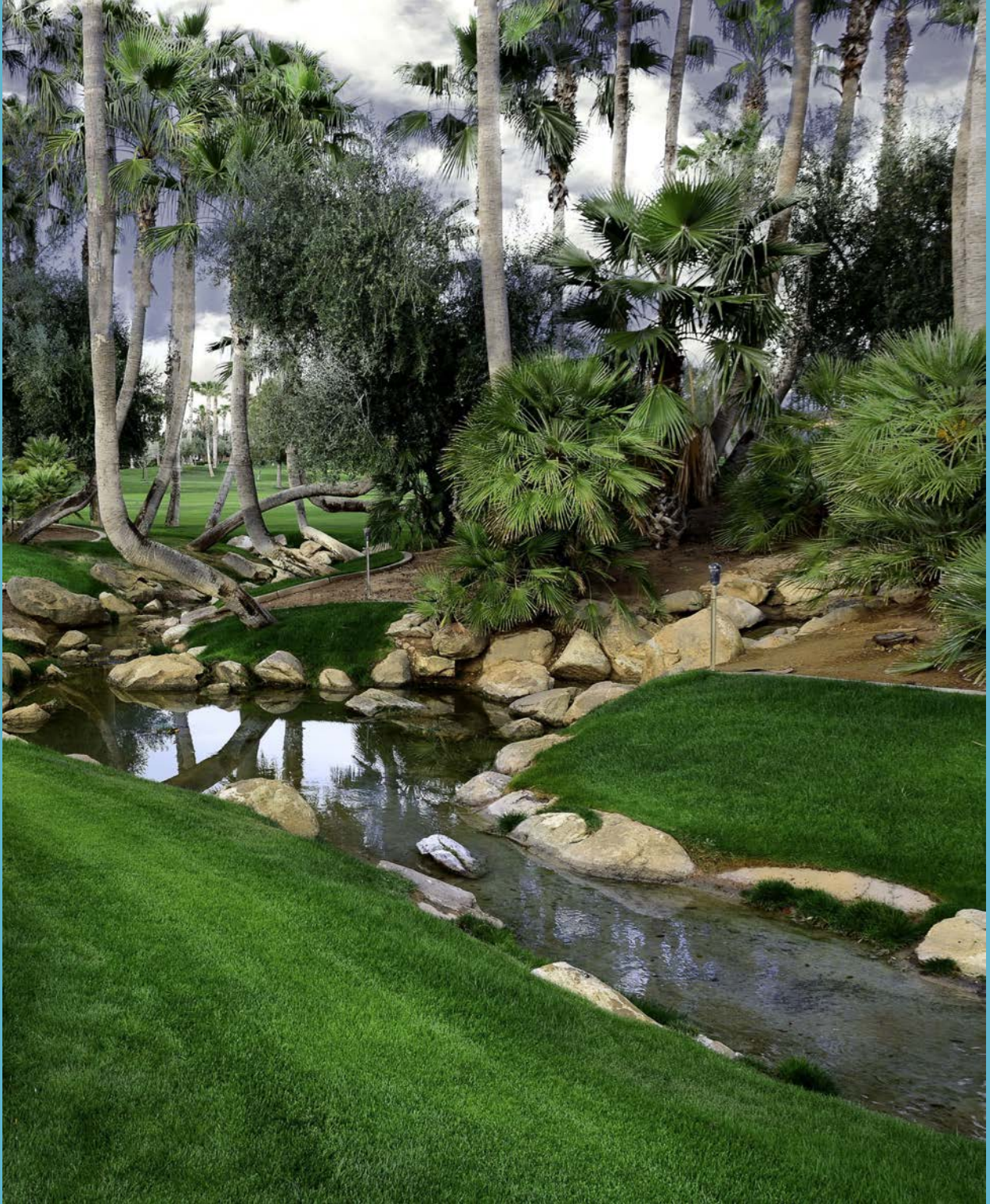




# VILLAGE HOME

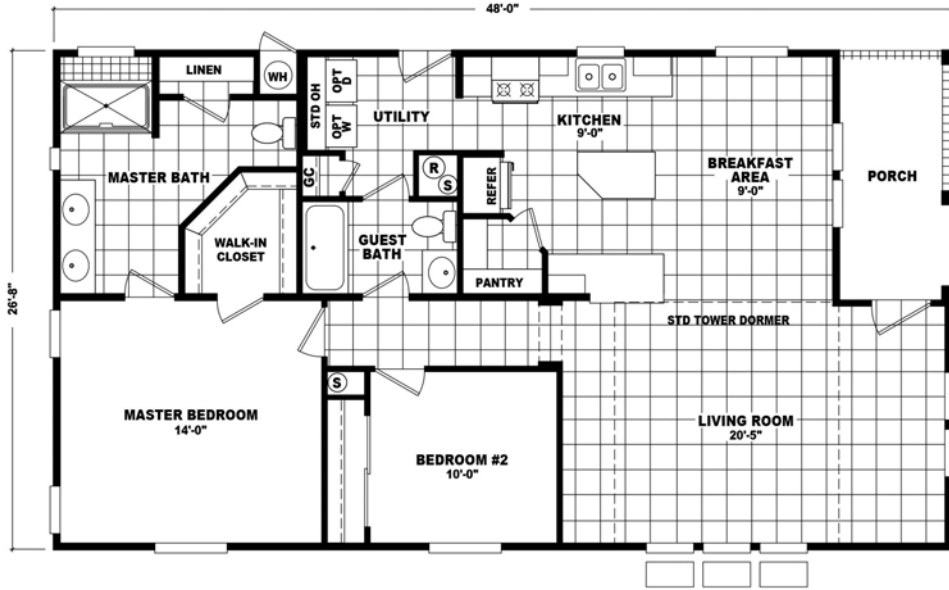
## FLOOR PLANS



Dealer License #8544

# VENICE

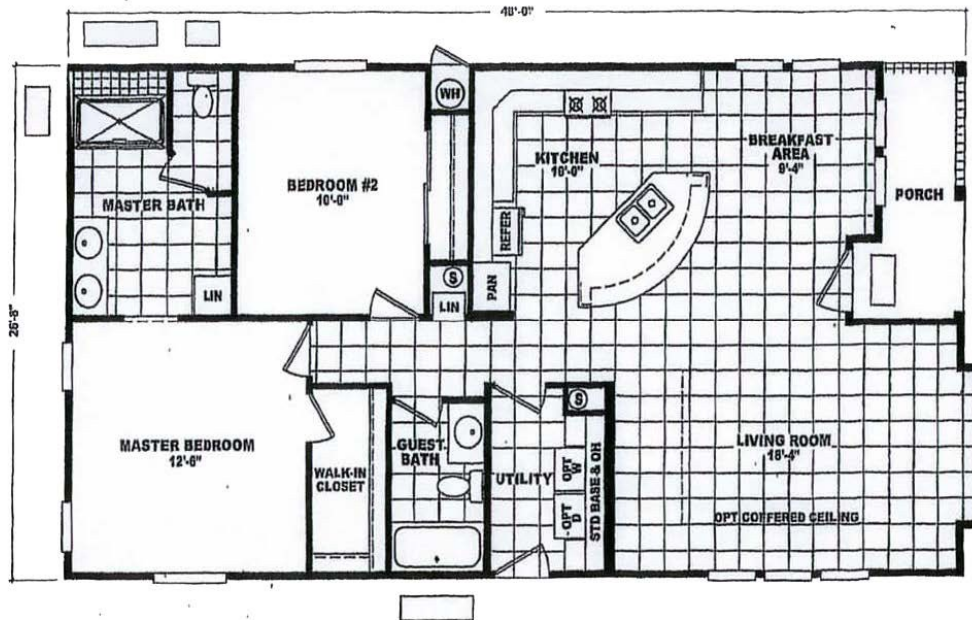
CAVCO HOME



2 Bedroom 2 Bath 1280 sq ft

# POTENZA

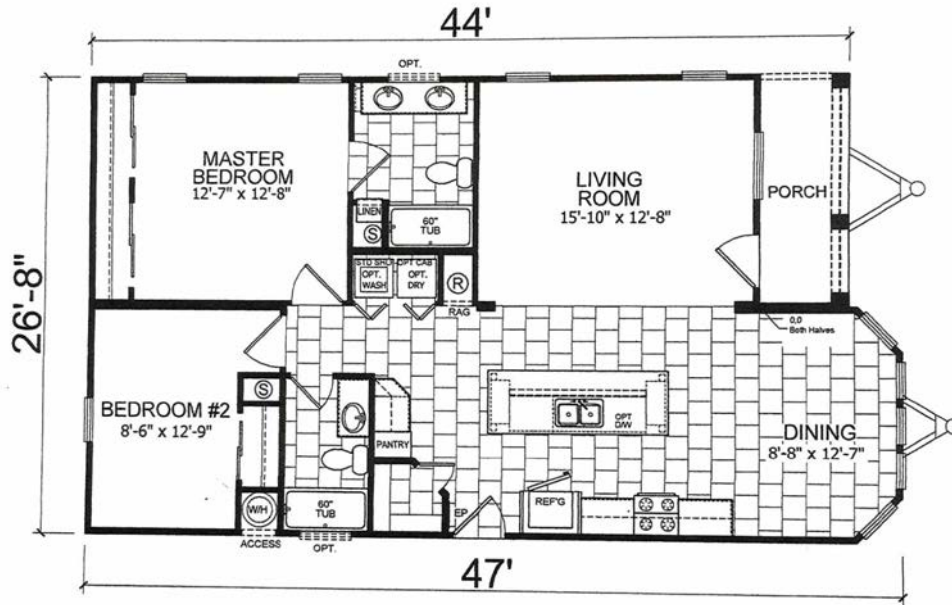
CAVCO HOME



2 Bedroom 2 Bath 1288 sq ft

# FINESTRA

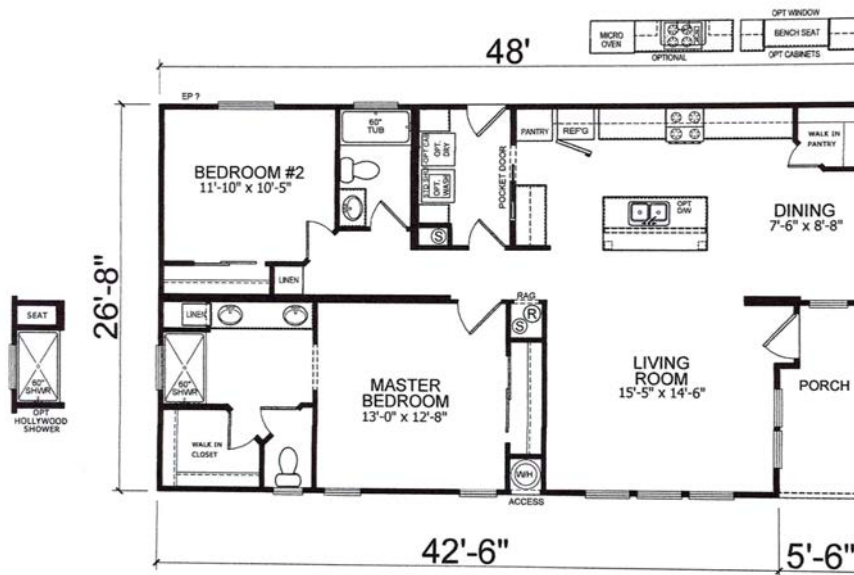
CHAMPION HOME



2 Bedroom 2 Bath 1206 sq ft

# MILAN

CHAMPION HOME



2 Bedroom 2 Bath 1280 sq ft

# WHAT'S INCLUDED

## 7-Year Home Warranty

## Space Rent Incentive

### Interior Features

- 9' flat ceilings
- Ceiling-fan ready
- 2" wood blinds with valance/cornice
- Wood window sills
- All lighting fixtures
- 2 solar tubes, choice of location

### Kitchen Features

- Whirlpool stainless steel appliances—refrigerator, dishwasher, self-clean oven and built-in microwave
- Recessed can lighting
- Formica countertop with tile backsplash
- Custom-designed cabinetry with wood doors
- Single-lever faucet with sprayer

### Exterior Features

- Full carport with awning / concrete drive
- Concrete front steps / border around home
- Architectural shingle roof
- 16" eaves and gutters
- Designer glass front door
- Nine lite half-glass rear door
- Two hose bibs
- Vinyl dual glaze windows

### Bathroom Features

- Large, tiled master bath shower
- Double-sink master vanity
- Comfort height vanities/toilets
- Fiberglass tub-shower in guest
- Formica countertops with tile backsplash

### Construction

- R-33 roof insulation
- Air conditioner / heat pump
- Choice of exterior / interior paint colors
- 40-gallon electric water heater
- 200 amp total electric home
- Overhead duct system
- Whole house water shut-off valve
- 30 lb. roof load